

AUCTION

TIMED ONLINE

Farm Estate

1676 101st Ave SE, Wimbledon, ND 58492

OPENS: Thursday, March 10

CLOSES: THURSDAY, MARCH 17 | 1PM CST 2022



PREVIEW: Friday, March 4 – Thursday, March 17 from 8:00AM-5:00PM, contact Phil Mueller, 701.840.1262. (Call Before)
LOADOUT: Friday, March 18 – Thursday, March 31, contact Phil Mueller, 701.840.1262.

TRACTORS

2011 New Holland T9.505, 4WD, deluxe cab, powershift, 4 hyd., power beyond, return flow, Hi-Cap 57 gpm hyd. pump, LH reverser, front & rear diff lock, IntelliView 4 monitor, integrated auto steer, New Holland 262 receiver, power mirrors, front bumper casting, (10) rear suitcase weights, front & rear wheel weights, Goodyear 710/70R42, 2,291 hrs., tractor S/N ZBF214047, receiver S/N57513-363-85474277

2011 New Holland T9.390, 4WD, luxury cab, heated leather seat, power mirrors, powershift, 5 hyd., return flow, Hi-Cap 55 gpm hyd. pump, LH reverser, 3 pt. w/quick hitch, large 1000 PTO, integrated auto steer, New Holland 372 receiver, HID lights, Michelin 480/80R50 duals, 3,826 hrs., tractor S/NXBF214019, receiver S/N57513-363-85474277

1995 Case-IH Steiger 9270, Cummins, 335 hp., powershift, 4 hyd., return flow, large 1000 PTO, Outback E-drive guidance, decelerator pedal, 24.5-32 band duals, shows 1,667 hrs., S/NJEE0033907

1981 IH 1086, 4 spd. w/torque amplifier, 3 hyd., 3 pt., 540 & small 1000 PTO, front weight box, double doors, 10.00-16 front tires, 18.4-38 rear tires, 6,286 hrs., S/N67484

COMBINES

2008 John Deere 9870, PRWD, STS, Contour-Master, 3 spd., 5 spd. HD feeder house, deluxe controls, auto steer ready, Y&M, Command Center display, Mauer hopper ext., 26' high cap. unloading auger, fine cut chopper, round bar & small wire concaves, 520/85R38 front duals, 600/65R28 rear tires, 2,033 sep. hrs., 2,897 engine hrs., S/NH09870S725786

2005 John Deere 9760, STS, Contour-Master, 3 spd., variable spd. feeder house w/cooler, deluxe controls, auto steer ready, Y&M, brown box display, John Deere hopper ext., 26' unloading auger, fine cut chopper, single pt. hookup, round bar & small wire concaves, 800/70R38 front tires, 18.4-26 rear tires, 2,758 sep. hrs., 3,918 engine hrs., S/NH09760S711104

HEADS & HEADER TRAILERS

2010 John Deere 635F flex head, 35', hyd. fore/aft, poly finger reel, low dam, poly auger fingers, full poly skirts, stubble lights, single pt. hookup, S/N1H0635FVA0737442

2005 John Deere 635F flex head, 35', hyd. fore/aft, poly finger reel, low dam, poly finger auger, full poly, poly snouts, stubble lights, single pt. hookup, S/NH0635F711445

2009 John Deere 612C StalkMaster chopping corn head, 12x30", stubble lights, single pt. hookup, S/NH0612CC730109

John Deere 912 pickup head, 12', 6- belt, wind screen, multi-pt. hookups, S/NH00912B635259

(2) Stud King 38 tandem axle header trailers, 38', spring susp. front dolly wheel, electric brakes, light kit, ratchet tie-downs, front fenders, adj. saddle mounts, 235/80R16 tires on 8-bolt steel rims

Rite Way HS3500 single axle header trailer, 35', adj. bar height, 275/60R15 tires on 6-bolt steel rims

SWATHERS

John Deere 590 pull-type swather, 25', hyd. auto fold, steel bat reel, 540 PTO, S/NE00590A959621

Case-IH 8220 pull-type swather, 25', hyd. auto fold, steel bat reel, 540 PTO, S/NCFH0065635

GRAIN CART

Brent 880 grain cart, hyd. pivoting spout, large 1000 PTO, Agrimatics Libra cart, Bluetooth, roll tarp, Digi-Star EZ2200 scale, sight glass, 30.5L-32 tires, S/NB22020147

AIR SEEDER

Flexi-Coil 5000 air seeder, 39', 9" spacing, 3-section fold, floating hitch, walking tandems across, 21" rubber packer wheels, hyd. folding markers, stealth openers, 2-bar harrow, 9.5L-15 tires, w/2320 tow-behind commodity cart, double shoot setup for single, ground drive, hyd. fan, dolly wheel hitch, 16.5L-16.1 front tires, 23.1-26 rear tires, seeder S/NADB0000T078724, cart S/NG2320A0T079665

PLANTERS

John Deere 7200 MaxEmerge II planter, 12x30", 3-section front fold, ground drive, double spring down pressure, VacuMeter, (2) 110 gal. poly liquid fertilizer tanks, hyd. markers, John Deere Computer-Trak 250 monitor, 7.60-15SL tires, S/NH07200B303873

IH 500 Cyclo planter, 8x30", 3 pt., small 1000 PTO, hyd. pump, hyd. drive fan, ground drive, hyd. folding marker arms, rubber closing wheels, S/N0970105U009055

TILLAGE EQUIPMENT

2002 Brandt Contour Commander 7000 pull-type heavy harrow, 70', 3-section auto fold, tension adj., 5-bar harrow, 16.5L-16.1 front tires, 9.5L-15 rear tires, S/N49238

1997 John Deere 980 field cultivator, 44-1/2', 6" spacing, 5-section fold, 9" shovels, single pt. depth, walking tandems across, 3-bar mounted harrow

Wil-Rich field cultivator, 36', 6" spacing, 3-section fold, walking tandems across, 3-bar harrow, 9.5L-15 tires, S/N11394

Calkins field cultivator, 36', 5" spacing, 5-section fold, walking tandems across, 3-bar mounted harrow, 11L-15 tires

2003 Case-IH PTX300 chisel plow, 40', 12" spacing, 3-section fold, walking tandems across, single pt. depth, Raven AccuFlow Vortex NH3 setup, 4" spike shovels, adj. hitch, rear hitch, Summers 3-bar harrow, 9.5L-15 tires, S/NCBJ0015049

1985 John Deere 1610 chisel plow, 35', 12" spacing, 3-section fold, 4" spikes, walking tandems across, Summers 3-bar harrow, 7.60-15 tires

Wishek 842T disc, 26', 11" spacing, 3-section fold, floating hitch, 27" smooth discs, spring mounted sections, mud scrapers, Gates 2-bar harrow, 12.50-16 tires, S/N2769826

IHC 700 8x16" plow, spring auto reset, on land hitch

ROW CROP EQUIPMENT

John Deere 845 row crop cultivator, 13x30", 3 pt., 3-section flat fold, spring shanks w/sweeps, rubber gauge wheels, 20.5x8.0-10 front gauge wheels, S/NN00845X001811

IH 133 row crop cultivator, 9x30", 3 pt., 3-section fold, spring shanks, rubber gauge wheels, 7.50-14 tires

Brillion row crop cultivator, 9x30", 3 pt., S-tines, 150 gal. poly tank, rubber gauge wheels

SEMI TRACTORS

2006 Freightliner Columbia tandem axle day cab, 60 Series Detroit, 10 spd., engine brake, air ride cab & susp., air slide 5th, cruise, diff lock, heated power mirrors, dual aluminum tanks, Ali Arc aluminum front bumper, rear pintle hitch, front 1/4 fenders, 175" WB, 11R22.5 tires on steel rims, 504,712 miles

2005 Freightliner Columbia tandem axle day cab, C13 Cat, 10 spd., engine brake, air ride cab & susp., air slide 5th, cruise, diff lock, heated power mirrors, power windows, dual aluminum fuel tanks w/integrated hydro tank, approx. 30 gal., front 1/4 fenders, 178" WB, 295/75R22.5 tires, 730,400 miles

1990 Kenworth K100F tandem axle cabover sleeper, air ride cab, Cummins, Eaton 9 spd., spring ride, air slide 5th, diff lock, heated power mirrors, air up/down windows, dual aluminum tanks, 18,000 lb. axles, 3.55 gear ratio, 163" WB, 11R22.5 tires on steel rims, shows 163,561 miles

1990 Kenworth K100F tandem axle cabover sleeper, air ride cab, Cummins, Eaton 9 spd., spring ride, air slide 5th, diff lock, heated power mirrors, air up/down windows, dual aluminum tanks, 18,000 lb. axles, 3.55 gear ratio, 163" WB, 11R22.5 tires on steel rims, 675,278 miles

TRUCKS

1974 Ford F60 single axle, V8 gas, 10 spd., spring ride, 14-1/2"x91"x58" wood deck, Rugby box w/removable sides & end gate, roll tarp, PTO hoist, 9.00-20 duals, New clutch, 43,664 miles

1973 Ford F60 single axle, V8 gas, 10 spd., spring ride, 14-1/2"x91"x58" wood deck, Rugby box w/removable sides & end gate, roll tarp, PTO hoist, 9.00-20 duals, 49,031 miles

1970 Chevrolet C50 single axle, gas V8, 4&2 trans., 13-1/2"x40"x96" wood box, roll tarp, plumbed for drill fill, 8.25-20 tires, 45,609 miles

PICKUP

1993 Ford F250 XLT, single cab, long box, 5.8L, 5 spd. manual, 4WD, cloth, cruise, AM/FM, power windows/locks, manual locking hubs, 235/85R16 tires on steel rims, shows 106,203 miles

HOPPER BOTTOM TRAILERS

2014 Mauer 14MM011 tandem axle aluminum hopper bottom, 40'x92"x69", ag hoppers, spring ride, Shur-Lok roll tarp, LED lights, 285/75R24.5 tires on steel rims

2005 Wilson DWH500 Pacesetter tandem axle hopper bottom, 43'x102"x72", ag hoppers, air ride, aluminum frame, 2 spd. traps, Shur-Lok roll tarp, LED lights, 295/75R22.5 tires on steel rims

1990 Wilson DWH200 Pacesetter tandem axle aluminum hopper bottom, 8'x43'x78", ag hoppers, spring ride, roll tarp, 2 spd. traps, 11R22.5 tires on steel rims

Stoughton tandem axle aluminum hopper bottom, 42'x96"x80", std. hoppers, spring ride, single spd. traps, roll tarp, 11R24.5 tires on steel rims, crack in frame

SPRAYERS & SUPPORT ITEMS

2003 Apache 890 self-propelled sprayer, 5.9 Cummins, 90' boom, 5-section control, 850 gal. poly tank, poly rinse tank, triple nozzles, foam markers, Raven SCS 460 variable rate control, setup for 88" wheel spacing Outback auto steer, manual adj. axles, 12.4-28 & 11-28 front tires, 14.9-46 tires w/rear dual hubs, 2,945 hrs., S/N9032399

Computerspray 647/2 tandem axle pull-type sprayer, 58', 10" spacing, approx. 580 gal., ground drive, twin spray line auto controller, 14 gal. mix cone, 11L-15 tires, S/N0419ST533

Spray-Coupe 103 cab, 40' boom, 30" spacing, fence row nozzles, shows 455 hrs., S/N6485

Chemical transfer pumps, asst. plumbing

SPRAYER TRAILERS

Broyhill tandem axle water trailer, poly tank, approx. 1,000 gal., Briggs & Stratton 5 hp. transfer pump w/2" outlet, 11L-15 tires

Great Dane tandem axle van-body trailer, 35'x102"x96", spring ride, aluminum body & floor, roll-up rear door, fold-up stairs, (3) 1,550 gal. poly tanks on manifold system, 29 gal. mix cone, Honda GX160 transfer pump w/2" hookups

GRAIN HANDLING EQUIPMENT

DK Vac-U-Vator grain vac, 540 PTO, 5" inlet, cable lift head, Sutorbilt 6M-F rotary positive blower, sight glass, cone filter, 165/80R15 tires

Batco 1545 Field Loader belt conveyor, 45', 15" belt, 540 PTO, 205/70R15 tires, S/N15732

Westfield MK130-81 Plus swing auger, 81'x13", hyd. lift, electric hopper walker, adj. axle, 540 PTO, S/N201962

Brandt 1070 mechanical swing auger, 70'x10", hyd. lift, 540 PTO, 205/75R15 tires, S/N62467

Brandt unloading auger, 48'x8", 10 hp., 230V, 1 phase, on transport

Farm King unloading auger, 48'x8", 540 PTO, on transport

Hutchinson Century grain auger, 30'x8", belt drive, 540 PTO, on transport

Wheatheart hyd. jump auger, 8"

(2) Moridge 400 portable grain dryers, LP, 540 PTO, belt drive fan, 2'x78" unload hopper, approx. 14'x7" diameter, 6v or 12v, timer, 78-15 tires, S/N10098

OTHER EQUIPMENT

Melroe 630-5 pull-type rockpicker, hyd. bat reel, 11L-15 tires, S/N1031

Degelman R570P pull-type rockpicker, fork-style, 12.5L-15 tires, S/N23338

Naber rock lift, 3 pt., w/stand

IH 80 snowblower, 3 pt., 86"x32", hyd. chute, manual spout, 540 PTO, S/N3090904C012576

John Deere 127 pull-type rotary mower, 5', 540 PTO, S/N0127005370W

IH pull-type hay rake, 104', ground drive, H78-15 tires, S/N2597A

RECREATION

2000 Coachman Royal 338FLS Model 198, tandem axle bumper pull camper, 30', 13'x3' slide-out, 16' awning, fridge/freezer, propane 3-burner stove, oven, microwave, tub/shower, AC, (2) 30 lb. propane tanks, power jack, leveling jacks, ST225/75R15 tires on 6-hole rims

TANKS & TIRES

Approx. 12,500 gal. fuel tank, level gauge, pump

150 gal. diesel fuel service tank, 5'x27"x27", Fill-Rite FR4210D 20 gpm 12v pump, auto shut-off

50 gal. steel DEF service tank, 24"x24"x26", GPI EZ-8 12v pump

(2) Firestone 11L-15 tires, 12 ply on-6 hole rims, (1) 7.5-15 tire on 6-hole rim

Titan 14.9-46 tires on 10-hole rims

PARTS

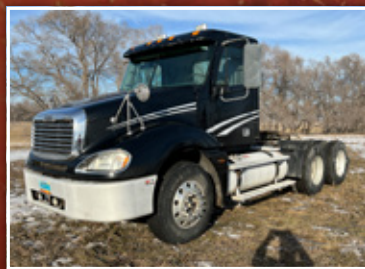
Sunflower 9" pans, approx. 30' bar, 12" spacing, reel w/end plates

John Deere STS round bar & small wire concaves

Asst. air seeder hoses, 1" & 2-1/2"

Asst. harrow teeth

Markus Mueller Farm Estate. Michelle Mueller, PR. Contact Phil Mueller, 701.840.1262 or Dave Benedict at Steffes Group, 701.237.9173 or 701.238.5062



701.237.9173 | SteffesGroup.com

Steffes Group, Inc., 2000 Main Avenue East, West Fargo, ND 58078



TERMS: All items sold as is where is. Payment of cash or check must be made sale day before removal of items. Statements made auction day take precedence over all advertising. \$35 documentation fee applies to all titled vehicles. Titles will be mailed. Canadian buyers need a bank letter of credit to facilitate border transfer. Scott Steffes ND81, MN14-51; Brad Olstad ND319, MN14-70; Max Steffes ND999, MN14-031; Justin Ruth ND2019 MN14-041

